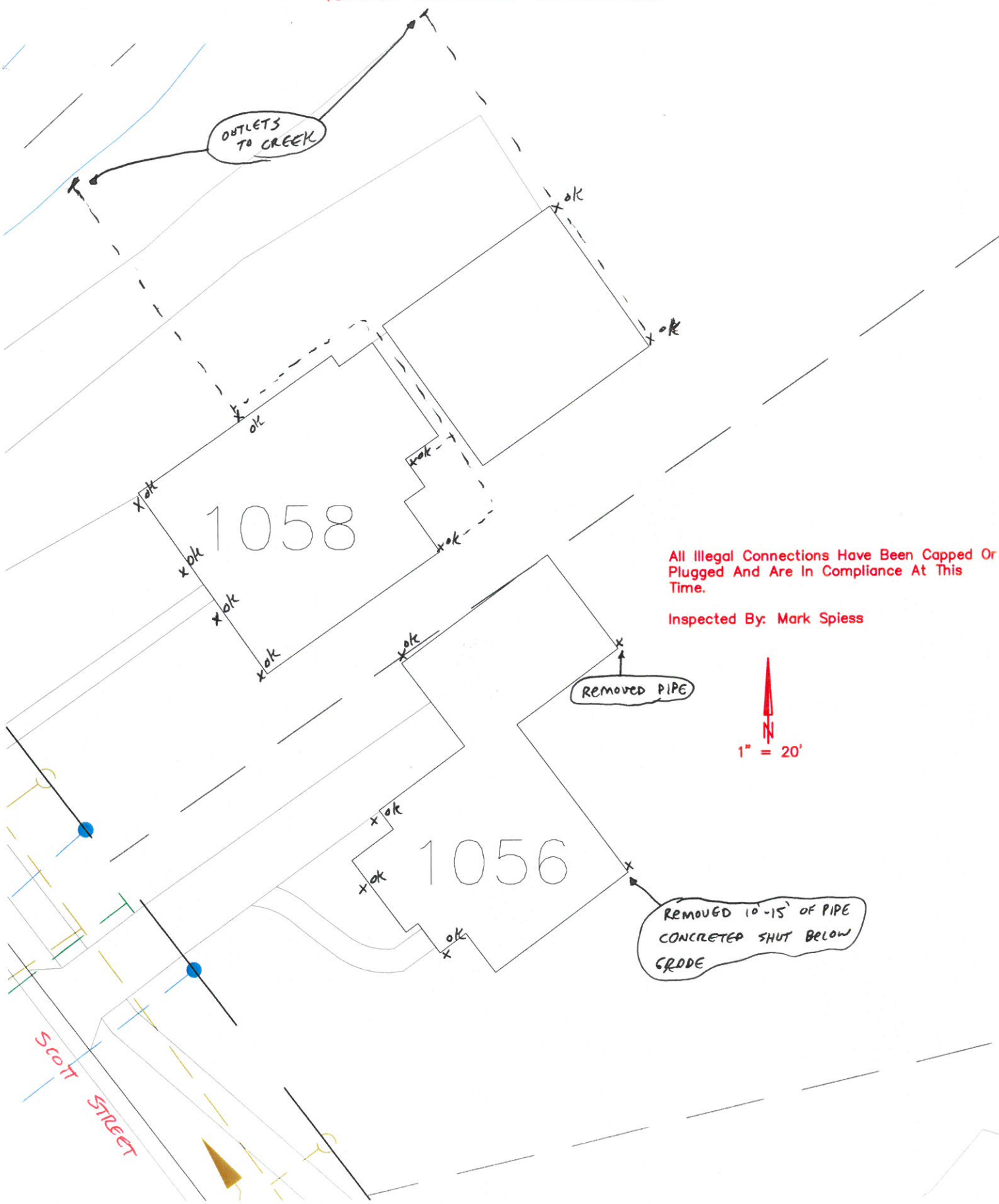


1056 & 1058 SCOTT STREET  
ILLEGAL DOWNSPOUT INVESTIGATION

2015



All Illegal Connections Have Been Capped Or  
Plugged And Are In Compliance At This  
Time.

Inspected By: Mark Spiess



REMOVED PIPE

REMOVED 10'-15' OF PIPE  
CONCRETE SHUT BELOW  
GROUND

SCOTT STREET